

# DIAMOND "C" RANCH POD D REPLAT

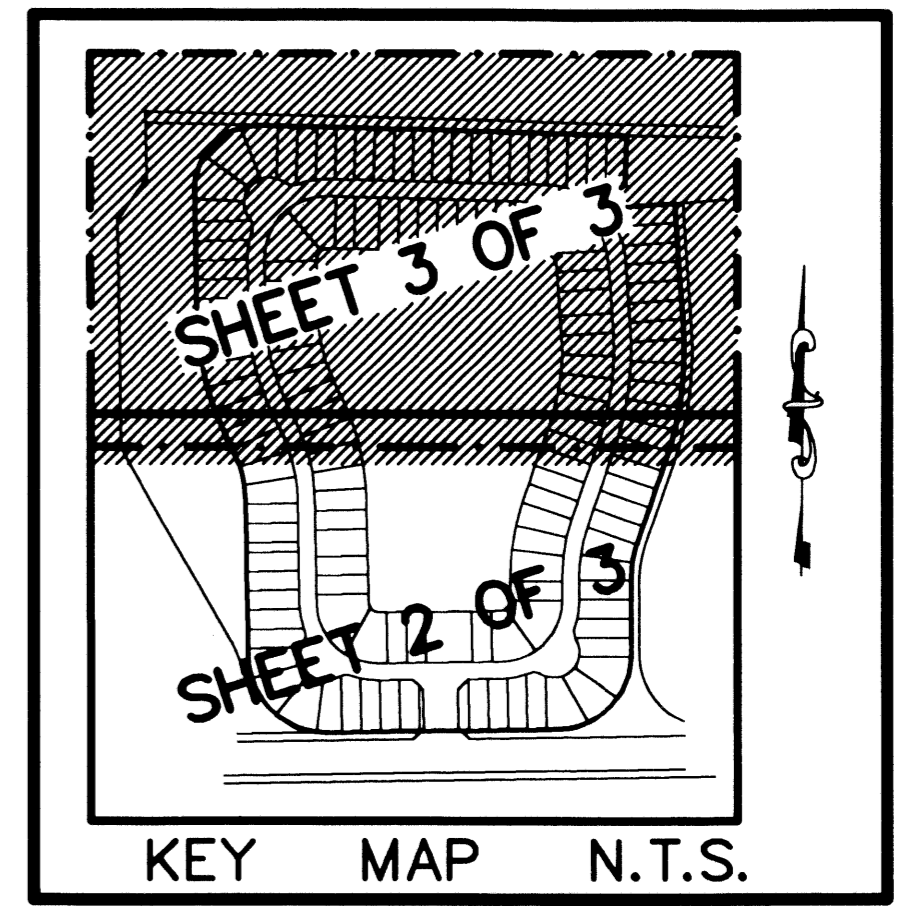
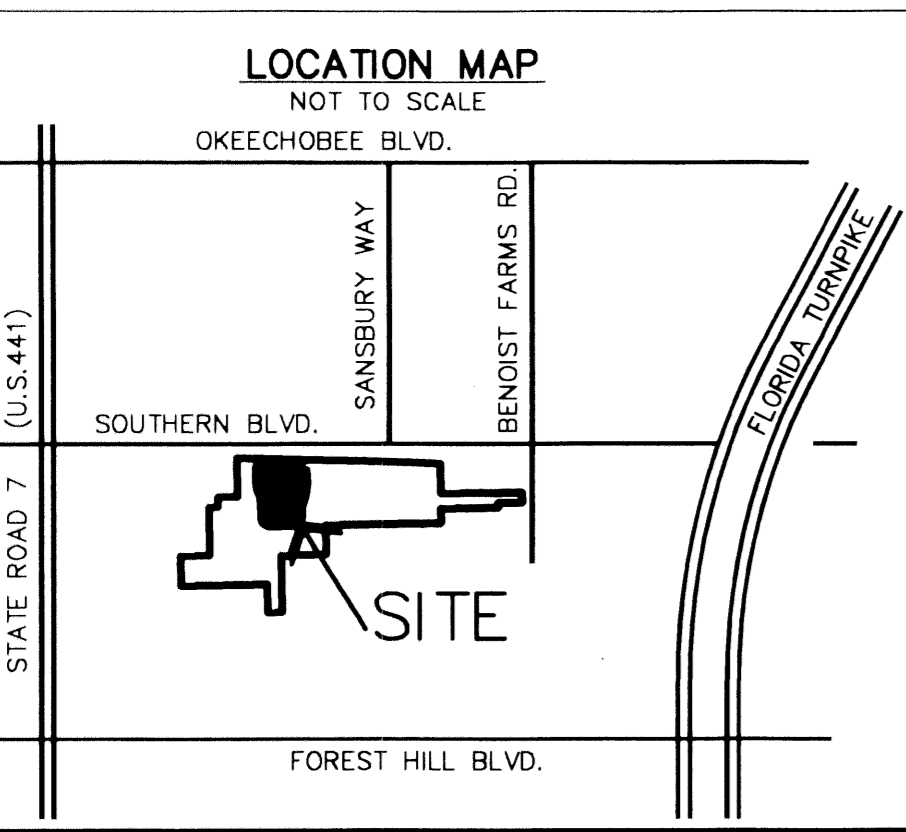
A PLANNED UNIT DEVELOPMENT BEING A PART OF DIAMOND "C" RANCH PUD, BEING A REPLAT OF POD D, DIAMOND "C" RANCH, AS RECORDED IN PLAT BOOK 99, PAGES 173 THROUGH 179 OF THE PUBLIC RECORDS OF PALM BEACH COUNTY, FLORIDA LYING IN SECTION 6, TOWNSHIP 44 SOUTH, RANGE 42 EAST, PALM BEACH COUNTY, FLORIDA

## NOTES COORDINATES, BEARINGS AND DISTANCES

COORDINATES SHOWN ARE GRID  
 DATUM = NAD 83 1990 ADJUSTMENT  
 ZONE = FLORIDA EAST  
 LINEAR UNIT = US SURVEY FEET  
 COORDINATE SYSTEM 1983 STATE PLANE  
 TRANSVERSE MERCATOR PROJECTION  
 ALL DISTANCES ARE GROUND  
 SCALE FACTOR = 1.00002175  
 GROUND DISTANCE X SCALE FACTOR = GRID DISTANCE  
 BEARINGS AS SHOWN HEREON ARE GRID DATUM, NAD 83 1990 ADJUSTMENT, FLORIDA EAST ZONE.

S88°33'01"E (PLAT BEARING) 00°04'41" = BEARING ROTATION  
 S88°37'42"E (GRID BEARING) COUNTER CLOCKWISE (PLAT TO GRID)  
 NORTH LINE THIS PLAT

THIS INSTRUMENT PREPARED BY  
 DAVID P. LINDLEY  
 OF  
 CAULFIELD and WHEELER, INC.  
 SURVEYORS - ENGINEERS - PLANNERS  
 7301-A WEST PALMETTO PARK ROAD, SUITE 100A  
 BOCA RATON, FLORIDA 33433 - (561)392-1991  
 JUNE - 2002



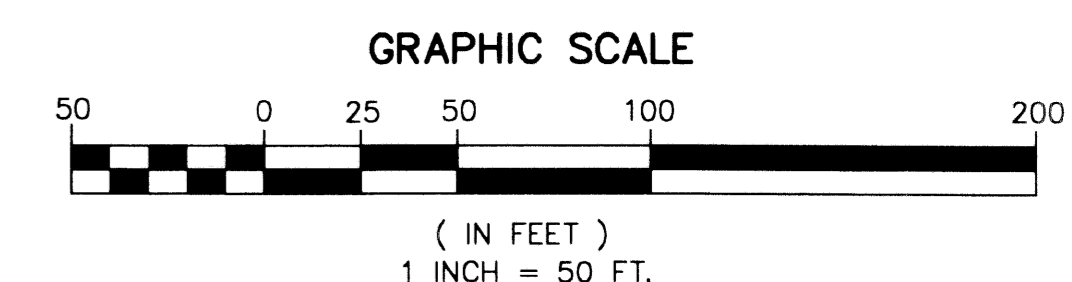
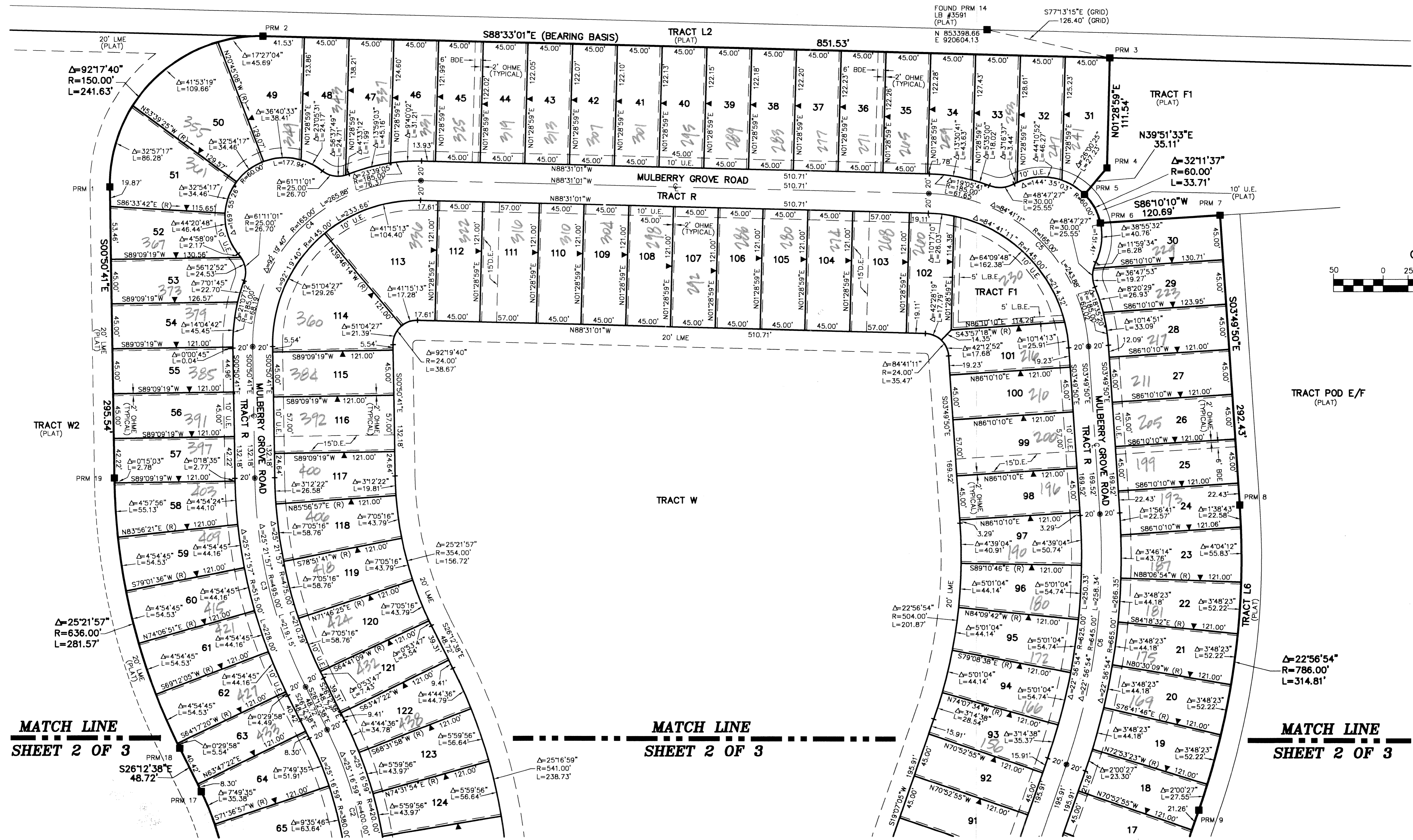
# 101

STATE OF FLORIDA  
 COUNTY OF PALM BEACH  
 THIS PLAT WAS FILED FOR  
 RECORD AT \_\_\_\_\_ M.  
 THIS \_\_\_\_\_ DAY OF \_\_\_\_\_  
 A.D. 2003 AND DULY RECORDED  
 IN PLAT BOOK \_\_\_\_\_ ON  
 PAGES \_\_\_\_\_ AND \_\_\_\_\_

DOROTHY H. WILKEN  
 CLERK CIRCUIT COURT

BY: \_\_\_\_\_  
 DEPUTY CLERK

SHEET 3 OF 3



COORDINATE TABLE

P.R.M.#	NORTHING	EASTING
1	853238.70	919722.53
2	853391.08	919876.10
3	853370.70	920727.40
4	853259.19	920724.67
5	853232.20	920702.20
6	853203.03	920718.19
7	853211.25	920838.61
8	852919.50	920858.54
9	852609.50	920817.37
10	852424.31	920753.46
11	852339.30	920739.29
12	852157.55	920739.64
13	851982.23	920567.69
14	851972.86	920300.89
15	851949.69	919847.71
16	852517.90	919841.31
17	852628.07	919814.56
18	852671.75	919792.98
19	852943.20	919727.29

CURVE TABLE

CURVE NO.	CHORD BEARING	CHORD DISTANCE
C1	N45°55'29"W	233.33'
C2	N13°34'09"W	175.08'
C3	N13°31'39"W	217.36'
C4	N45°19'09"E	238.04'
C5	S46°10'25"E	222.28'
C6	S07°38'38"W	256.62'
C7	S09°32'31"W	133.08'
C8	S44°31'19"W	231.53'

SUBDIVISION DIAMOND "C" RANCH POD D REPLAT  
 BOOK 100 PAGE 101  
 PLAT # 100A  
 RECORDING ZONE 4H  
 RECORDING P.L.D.  
 QUAD # 47  
 SE  
 TAZ 1009  
 PUD NAME

MATCH LINE  
 SHEET 2 OF 3

MATCH LINE  
 SHEET 2 OF 3

MATCH LINE  
 SHEET 2 OF 3